

Haegue Yang
Lacquer Paintings
1999 – ongoing

Barbara Wien
gallery & art bookshop

Schöneberger Ufer 65
10785 Berlin

+49 30 28385352
bw@barbarawien.de
barbarawien.de

Lacquer Paintings

1999-ongoing

Lacquer paintings are made of wood varnish poured on wooden panels. The process of the lacquer layers is determined by various methods. On the one hand there are compositional elements that are decided by the artist, such as the choice of matt or gloss varnish, the thickness of the lacquer layer and the choice of objects that appear in the varnish layers. The lacquer paintings *Sesame Summer-Harvest*, *Shiso Summer-Harvest*, *Sesame Summer-Harvest – thin* und *Sesame Summer-Harvest – thin dripping* include sesame and Shiso leaves of plants growing on the balcony of the artist, means that they are from the artist's immediate environment. On the other hand the production of lacquer paintings is an open process because it requires a long drying period outdoors. Meanwhile dust, insects, hair and other objects fall and get sealed in the layers of varnish. Similarly, rain affects the work production, as raindrops cause an unevenness. The result is an unique texture on the varnish surface as you can see in *Rain Gravity Mono I*. Stored tilted or leaned against the wall due to space constrain, the lacquer paintings often experience changes of the surface, it leads to bulges or wrinkles – as you can see in *Gravity Mono – Ikea Cupboard*. Here the lacquer layers are mounted on a door of an Ikea cupboard that was left after a new kitchen has been built.

The lacquer paintings are not intended to pursue the notion of painting in a classical sense, however a pictorial quality is generated. Yang employs her own extraordinary and not media-related way of working. Her works often incorporate elements that are unfamiliar and distant to her, unless she refers to her own circumstances. For Yang this process is an appropriation of objects/circumstances by observing the domestic sphere, a kind of 'domestication' – which is reoccurring in the production of lacquer paintings. The not yet dried varnish surface records the influence of these alien yet neighboring or surrounding elements over the time, thus reflecting the environment, weather, season as well as location.



Soaring Seedlings

2019-2023

Chipboard, wood varnish, found plants,
artificial plants, wig, seeds, dust, insects, hair
Spanplatte, Holzklarlack, gefundene Pflanzen,
künstliche Pflanzen, Perücke, Samen,
Staub, Insekten, Haar
60 × 60 × 2 cm



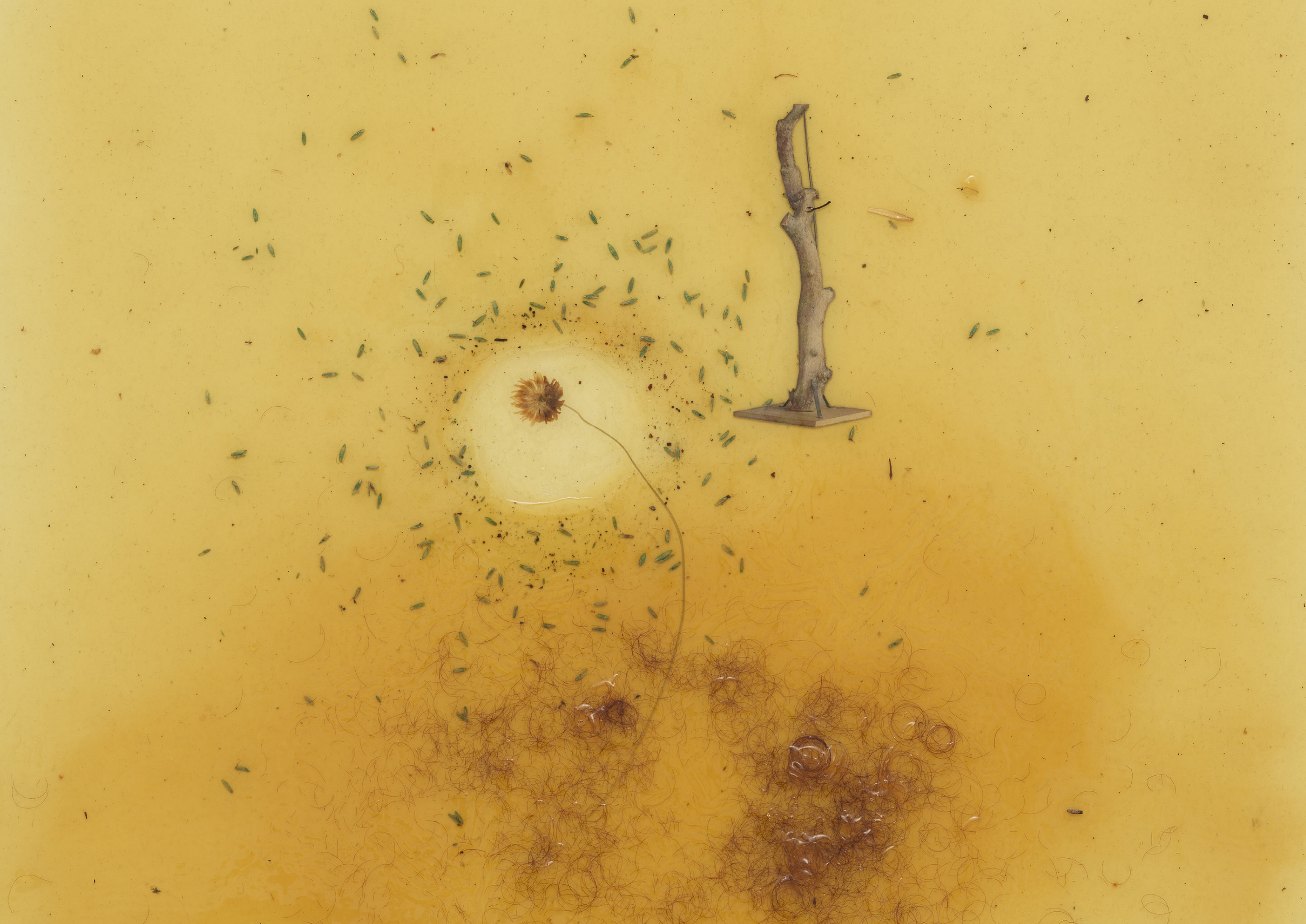


Fuzzy Trunks

2019-2023

Chipboard, wood varnish, found plant,
printed paper, wig, seeds, dust, insects, hair
Spanplatte, Holzklarlack, gefundene Pflanze,
bedrucktes Papier, Perücke, Samen, Staub, Insekten, Haar
70 × 50 × 2 cm





Velvet Vacuum Cosmic Salon

2019-2023

Chipboard, wood varnish, printed paper,

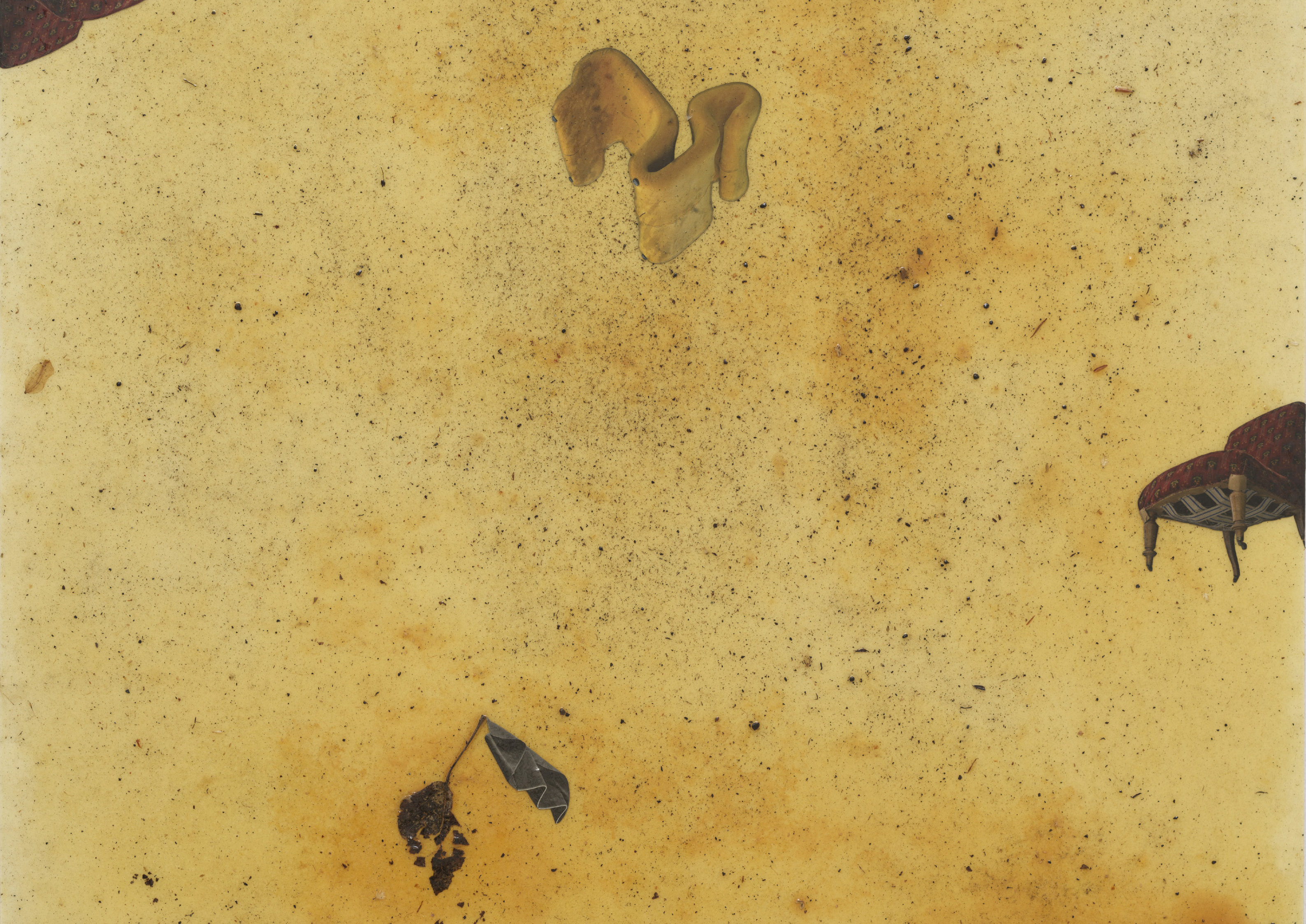
found plant, seeds, dust, dirt, hair

Spanplatte, Holzklarlack, bedrucktes Papier,

gefundene Pflanze, Samen, Staub, Schmutz, Haar

90 × 90 × 2 cm





Fern Vein

2023

Chipboard, wood varnish, found plants, wig, dust, insects, hair

Spanplatte, Holzklarlack, gefundene Pflanzen, Perücke, Staub, Insekten, Haar

35 × 25 × 2 cm





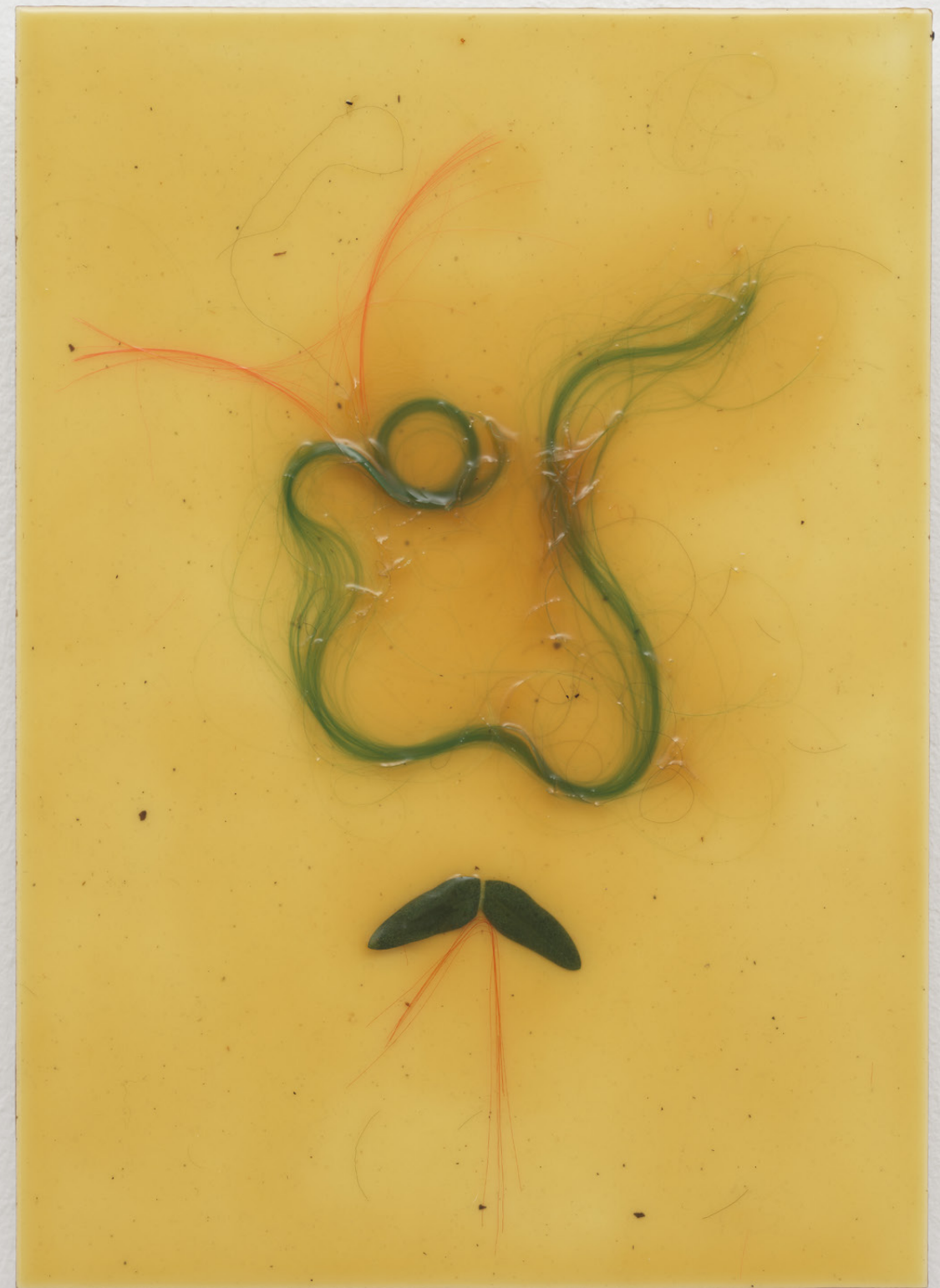
This is Not a Mustache

2023

Chipboard, wood varnish, wig, artificial plant,
seeds, dust, insects, hair

Spanplatte, Holzklarlack, Perücke, künstliche Pflanze,
Samen, Staub, Insekten, Haar

35 × 25 × 2 cm







Installation *Haegue Yang: Double Soul*, Statens Museum for Kunst, Copenhagen, 2022



Blade Notations – Blade Blowing

2019

Chipboard, wood varnish, blades, seeds, dust, insect, hair
 Spanplatte, Holzklarlack, Klingen, Samen, Staub, Insekten, Haar
 70 × 25 × 2 cm





Blade Notations – Blade Blast and Cane

2019

Chipboard, wood varnish, blades, found plants, dust, hair

Spanplatte, Holzklarlack, Klingen, gefundene Pflanzen, Staub, Haar

35 × 25 × 2.4 cm





Installation Art Basel, Basel, 2016

Old Twosome Crops – Sesame and Shiso

2016

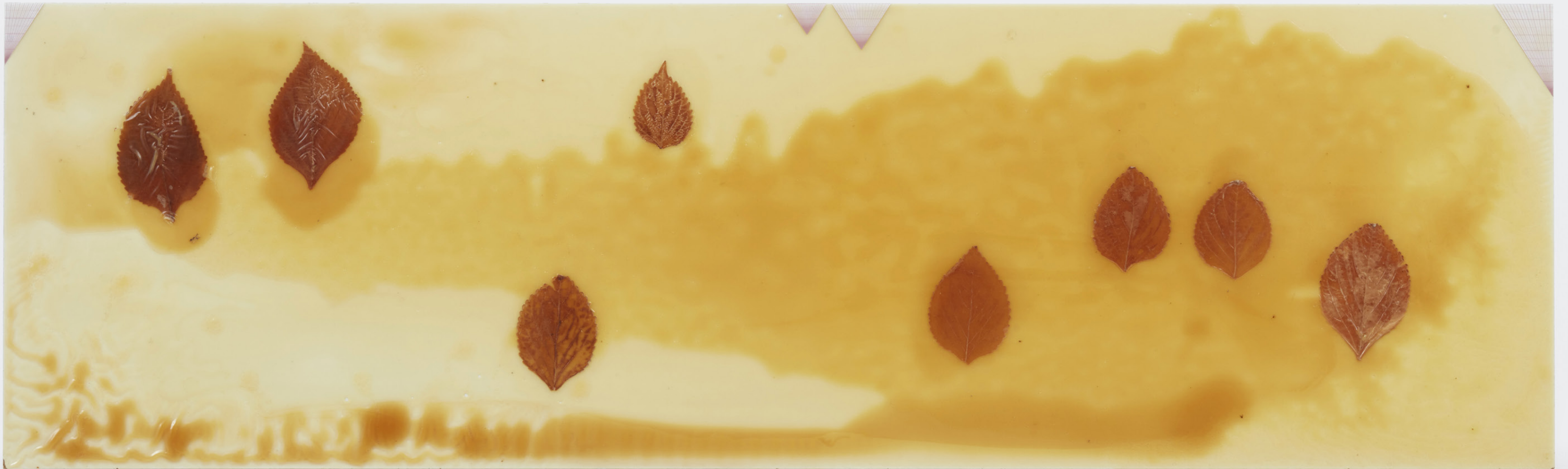
Chipboard, wood varnish, sesame leaves, shiso leaves

Spanplatte, Holzklarlack, Sesamblätter, Shisoblätter

100 × 60 cm







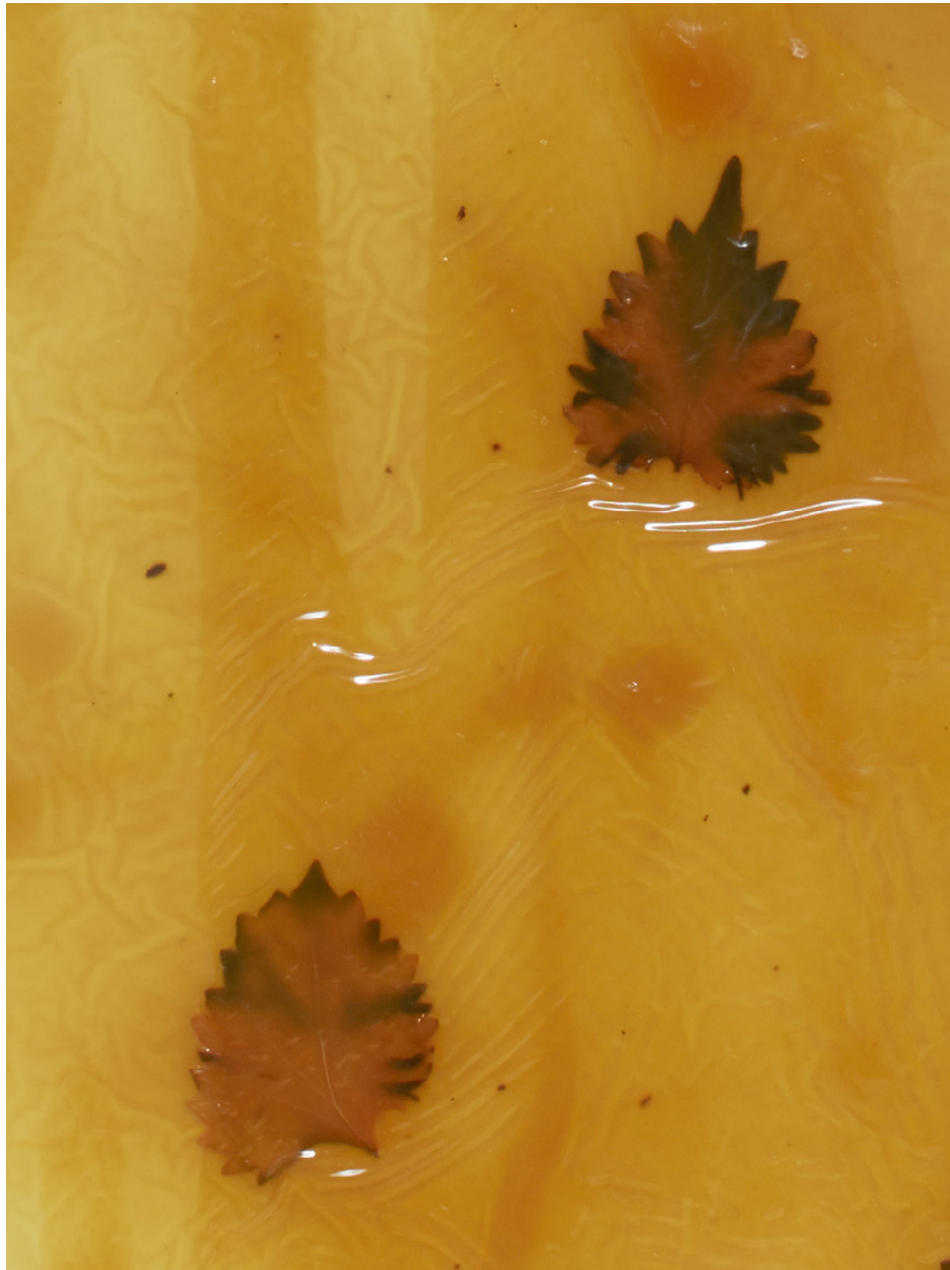
Crocodile Tears in Riverside Woods

2016

Chipboard, wood varnish, sesame leaves, graph paper

Spanplatte, Holzklarlack, Sesamblätter, Millimeterpapier

30 × 100 cm



Shiso Summer-Harvest

2011

Chipboard, wood varnish, Shiso leaves

Spanplatte, Holzklarlack, Shisoblätter

125 × 90 cm



Rain Gravity Mono I
2011
Chipboard, wood varnish
Spanplatte, Holzklarlack
125 × 90 cm



