

Jimmie Durham

Barbara Wien
gallery & art bookshop

Schöneberger Ufer 65
10785 Berlin

+49 30 28385352
bw@barbarawien.de
barbarawien.de



Who is Afraid of Red Yellow Blue

1997

Stones, paint, ceramic plates (broken)

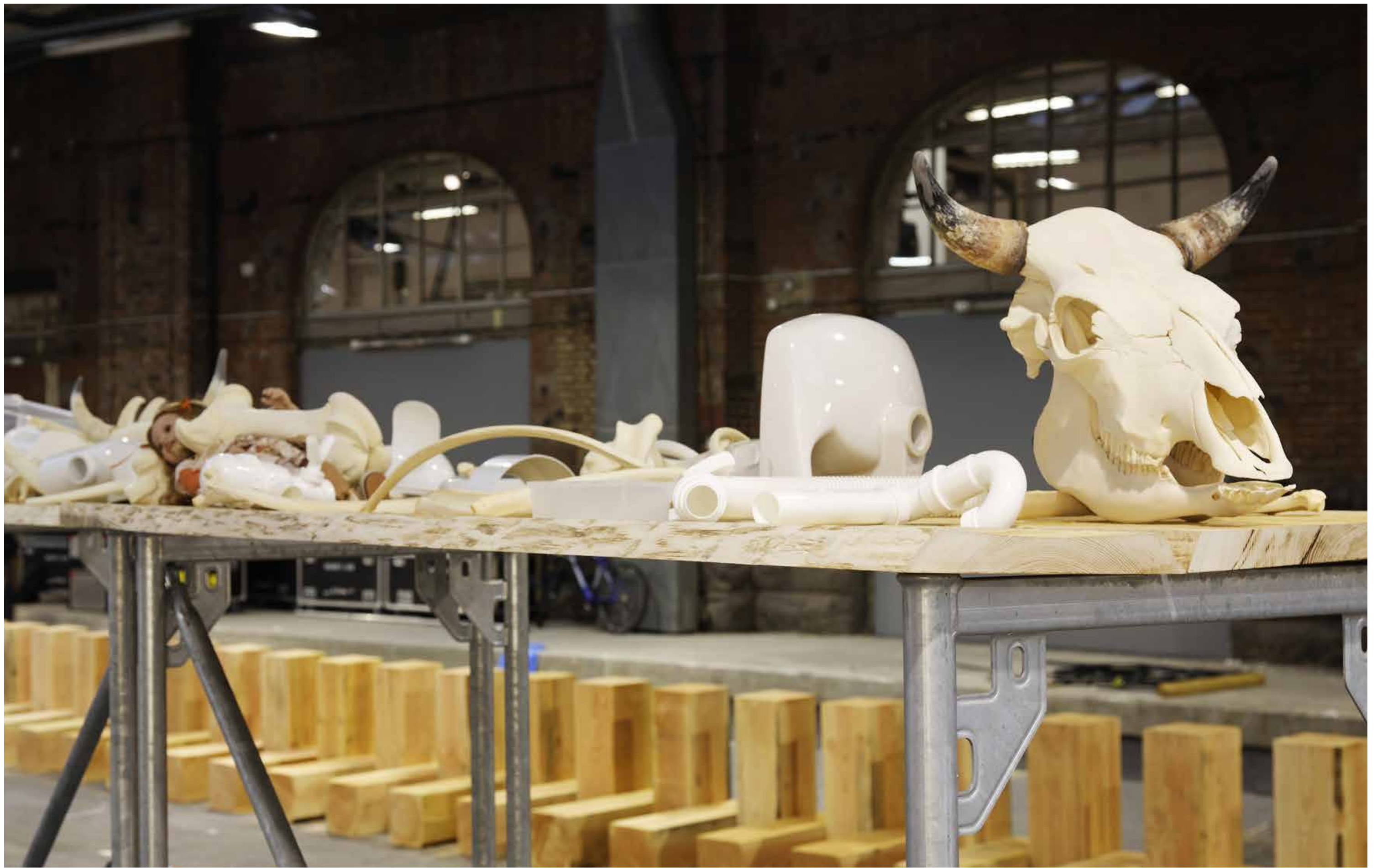
Steine, Farbe, Keramikteller (zerbrochen)

Blue stone/blauer Stein: 10 × 18 × 13 cm

Red stone/roter Stein: 15 × 40 × 30 cm

Yellow stone/gelber Stein: 13 × 27 × 18 cm

Overall dimensions variable/Gesamtmaße variabel



In the Air, long before Archeology
2008
Detail



In the Air, long before Archeology
2008
Detail



In the Air, long before Archeology
2008



TRAVERSESTEIN

2020

Travertine marble from Italy / Travertin Marmor aus Italien

Part / Teil 1: 115 × 220 × 150 cm; Part / Teil 2: 76 × 80 × 90 cm

Overall dimensions variable / Gesamtmaße variabel



**Core Sample from Stockholms Kulturhus,
Core Sample from Stockholms Moderna Museet**
1997

Stone/Stein

L. 15 × Ø 6,6 cm; L. 18 × Ø 5 cm; L. 42 × Ø 15,5 cm

Overall dimensions variable/ Gesamtmaße variabel

Electric

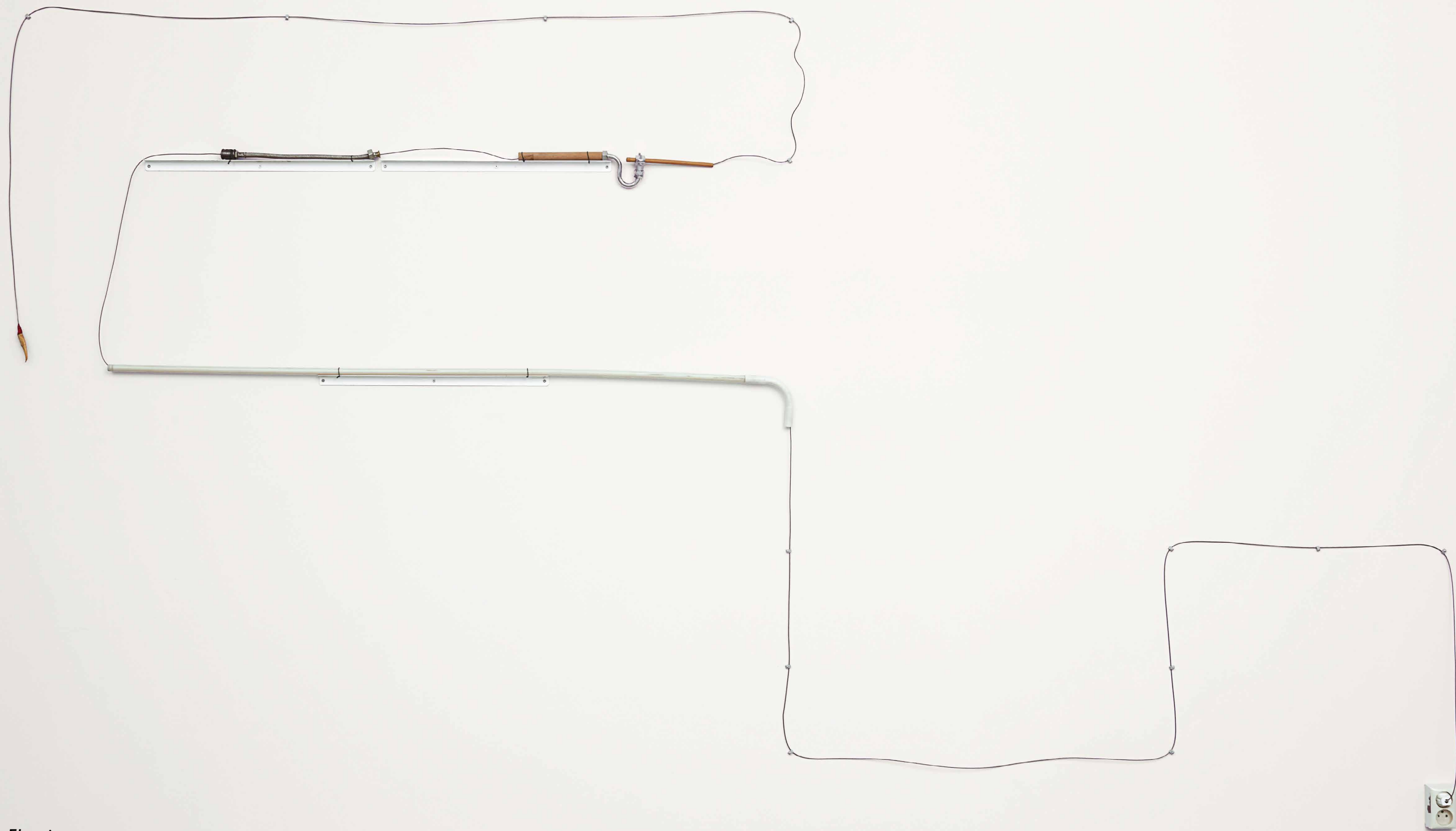
1995

Steel cable, plastic, crawfish claw, metal, wood, outlet

Stahlkabel, Kunststoff, Krebsschere, Metall, Holz, Steckdose

Dimensions variable / Maße variabel



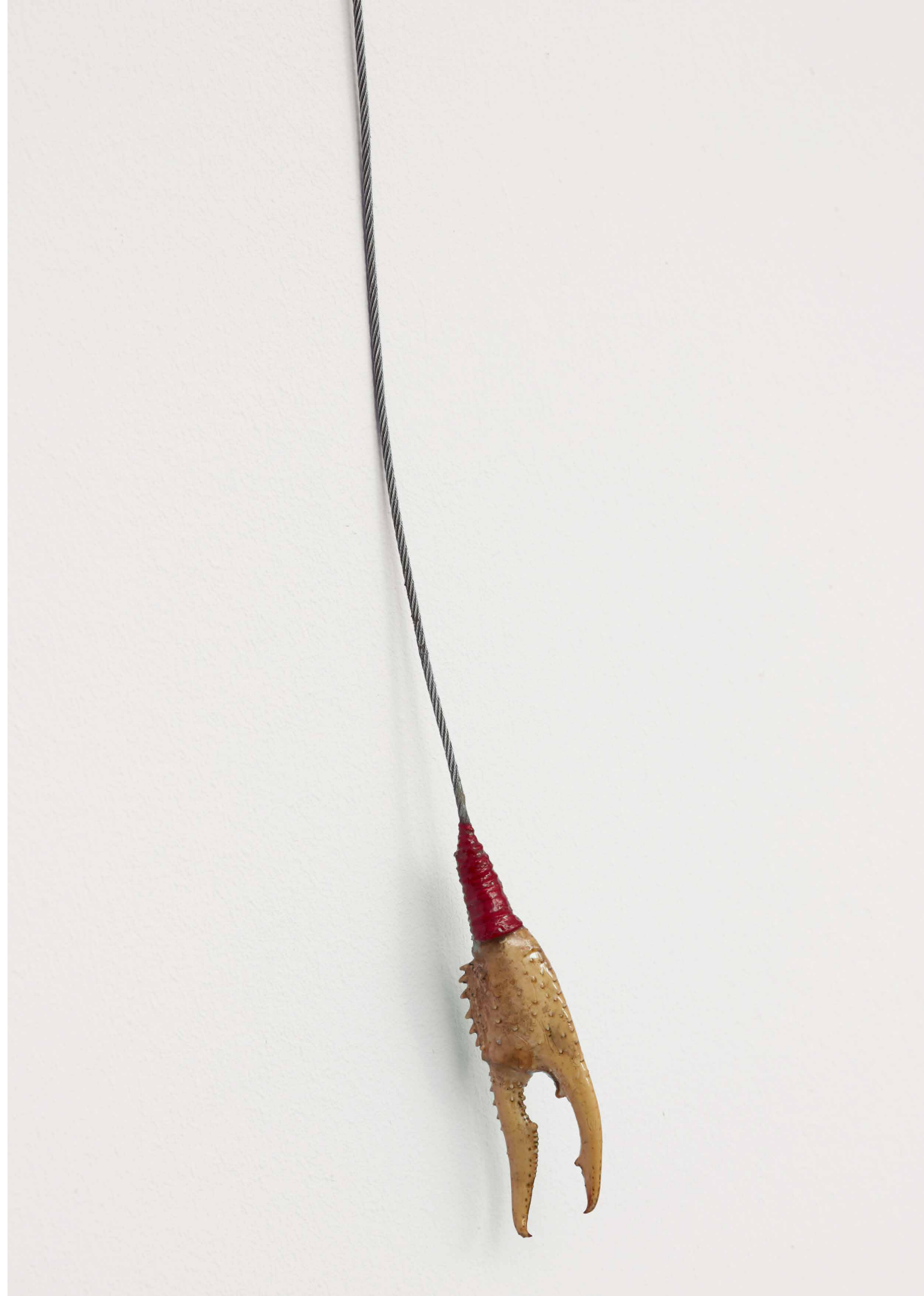


Electric
1995



Electric
1995
Detail

Electric
1995
Detail





Filz und Feuerstein No. I

1997

Wood, flint, felt

Holz, Feuerstein, Filz

20 × 50 × 30 cm



Filz un Flint

1997

Chair, hat and rock

Stuhl, Hut und Felsengestein

40 × 41 × 95 cm





Glass Bear

2019

Aluminium, glass, iron

Aluminium, Glas, Eisen

137 × 172 × 30 cm



Glass Bear
2019
Detail



Glass Bear
2019
Detail

OPERA

2020

Murano glass, stainless steel

Murano-Glas, Edelstahl

135 × 50 × 50 cm





OPERA
2020
Detail



OPERA
2020
Details



OPERA
2020
Detail

Strike Twice

2019

Metal, Murano glass

Metall, Muranoglas

67 × 53 × 20 cm

Unique from a series of 7 works with Murano glass

Unikat aus einer Serie von 7 Werken mit Muranoglas







Pissing in Germany

2012

Installation, 12 parts/Teile

Laser printed texts on paper, mounted on wood

Texte (Laserdruck) auf Papier, montiert auf Holz

Dimensions variable / Maße variabel

Installation *Jimmie Durham: Too Long and Drawn Out*, Galerie Barbara Wien, Berlin, 2012



15.05.12 11:46:12 01
4008-11101

DB

IHR EINKAUFSAHNHOF
Gute Geschäfte. Mehr erleben.

WERT-BON/VOUCHER
0,50 €

SANIFAIR

**Lösen Sie Ihren
SANIFAIR Wert-Bon ein!**

Bundesweit einlösbar bei allen
teilnehmenden Geschäften in
Bahnhöfen der Deutschen Bahn AG.
Örtlich teilnehmende Geschäfte:
siehe Einlöseübersicht im
SANIFAIR Foyer.

Einlösebedingungen (Auszug)*:

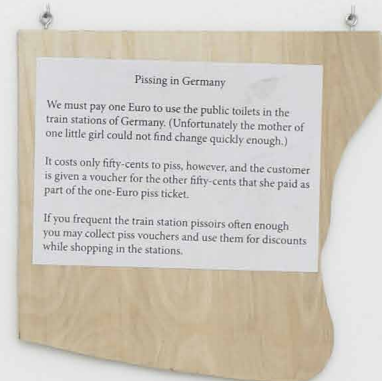
- Pro Einkauf und pro Person
ist 1 Wert-Bon einlösbar
- Mindesteinkaufswert 2,50 €

*Es gelten die im SANIFAIR aushängenden
allgemeinen Geschäftsbedingungen.

SANIFAIR Erfrischend anders!

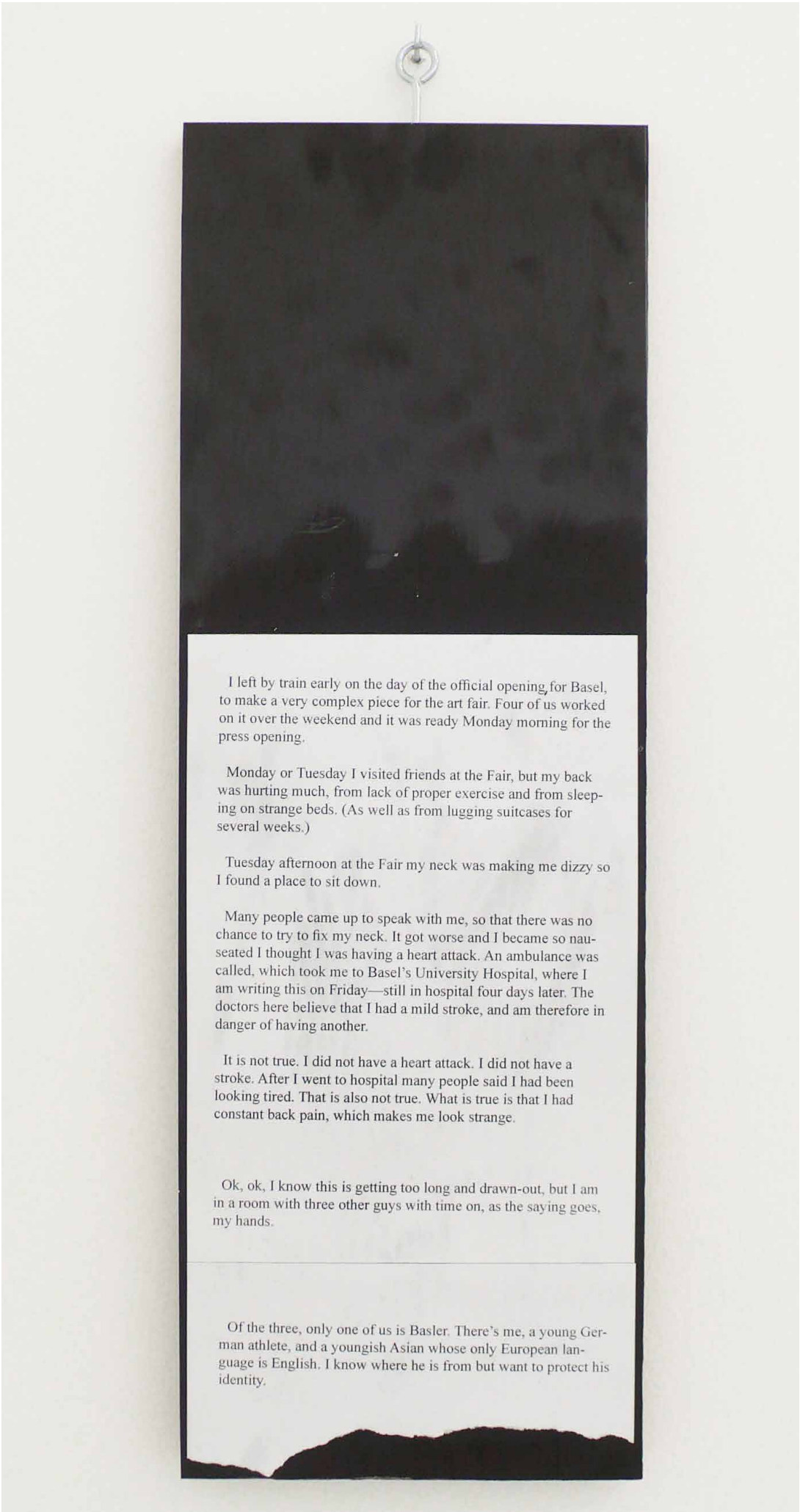
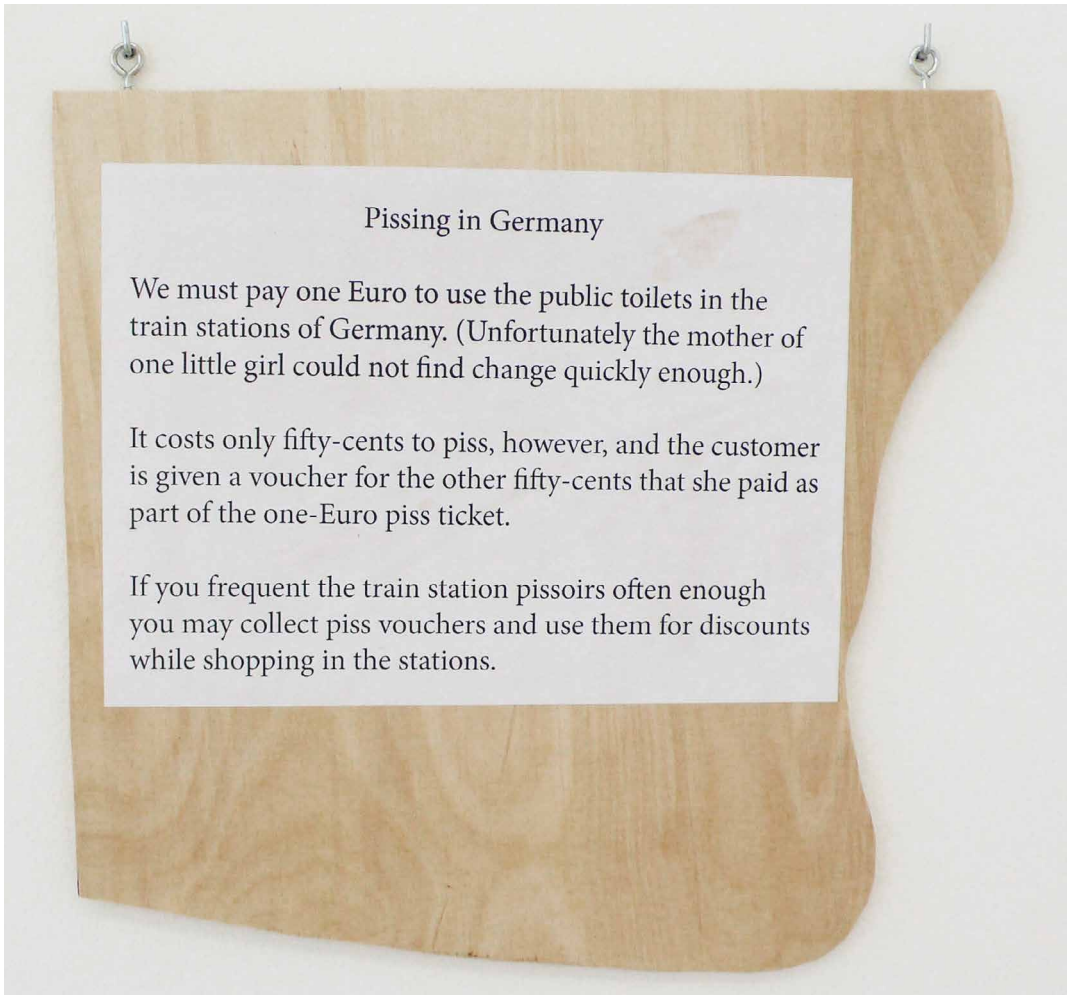
www.sanifair.de

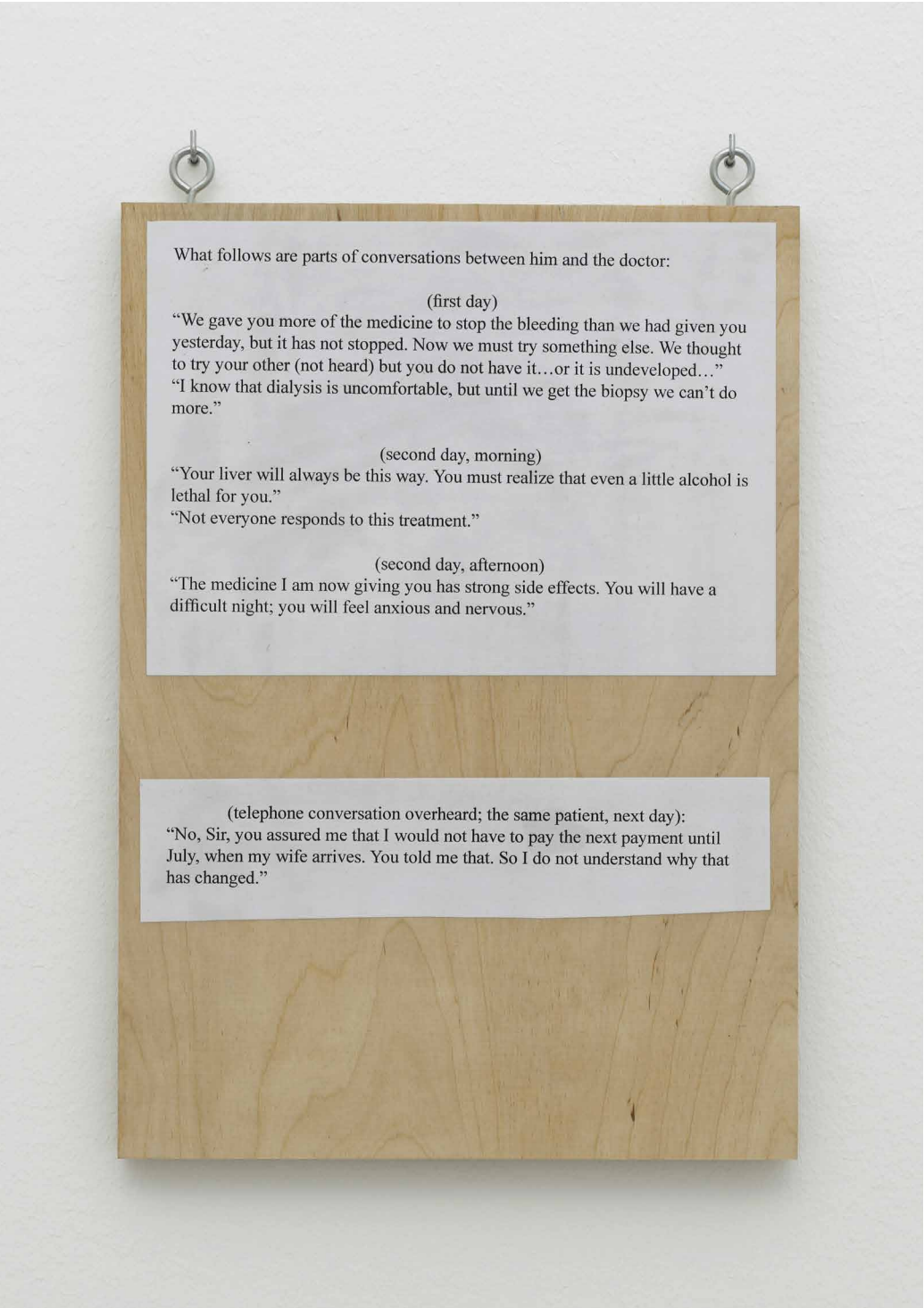
D DE A 00504213





Pissing in Germany
2012
Detail





Pissing in Germany
2012
Detail



Pissing in Germany
2012
Detail

Installation Jimmie Durham: *Too Long and Drawn Out*, Galerie Barbara Wien, Berlin, 2012



Road work and nostalgia

2012
2 parts/2 Teile

Paper and fabric on wood/
Papier und Stoff auf Holz
42 × 97 cm

Paper and fabric on bull neck skin/
Papier und Stoff auf Stiernackenleder
63 × 100 cm



Storbre Viem
for Sjur Grimstø

		Time
Mars 1957		
2.6	slikrenner	16
2.7	ryng	4
2.8		5
2.9	fra groven	5
april		
8		2
15	gade	3
16	op om viem	8
	syngende gade	3
		6
Mai 1958		
april		
7	ryng og gade	4
8	merkegaten	14
9		4
16	ny grind	8
17	op om	4
		8 8

Road work and nostalgia

2012

Details



The Piece of Wood

2005

Print on paper, wood

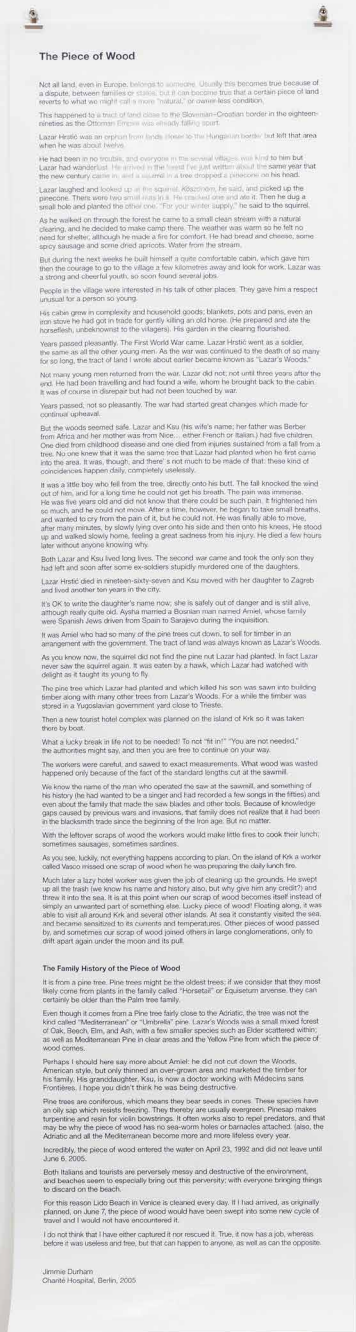
Druck auf Papier, Holz

Wood/Holz: 27 × 5 × 2 cm

Paper/Papier: 155 × 40 cm

Overall dimensions variable

Gesamtmaße variabel





French Anatomy

2015

Wood, fabric, glue, hair

Holz, Stoff, Leim, Haare

72 × 230 × 2 cm



dirt & hair on french linen

2010

Dirt, hair, acrylic paint on french linen

Schmutz, Haare, Acrylfarbe auf französischem Leinenbettbezug

190 × 42 × 13 cm





dirt & hair on french linen
2010
Detail

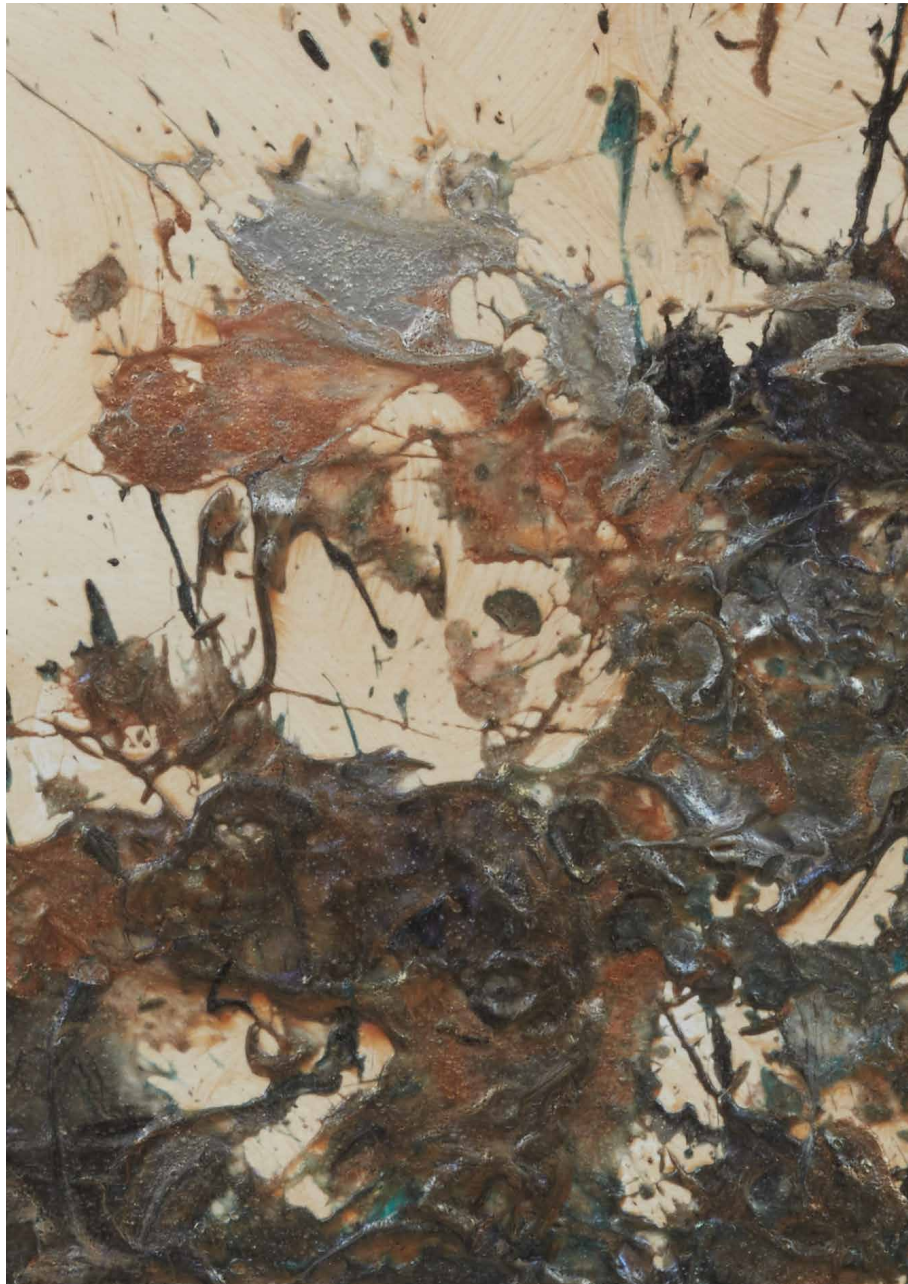


Siren Intermedia

2014

Acrylic paint, 'performed' on paper, signed and dated
 Acrylfarbe ,performed' auf Papier, signiert und datiert
 100 × 70 cm





The Direction of my Thoughts

2014

Acrylic paint, 'performed' on paper, signed and dated
 Acrylfarbe 'performed' auf Papier, signiert und datiert
 100 × 70 cm





Corydalis Comptus

2014

Acrylic paint, 'performed' on paper, signed and dated
Acrylfarbe 'performed' auf Papier, signiert und datiert
50 × 65 cm

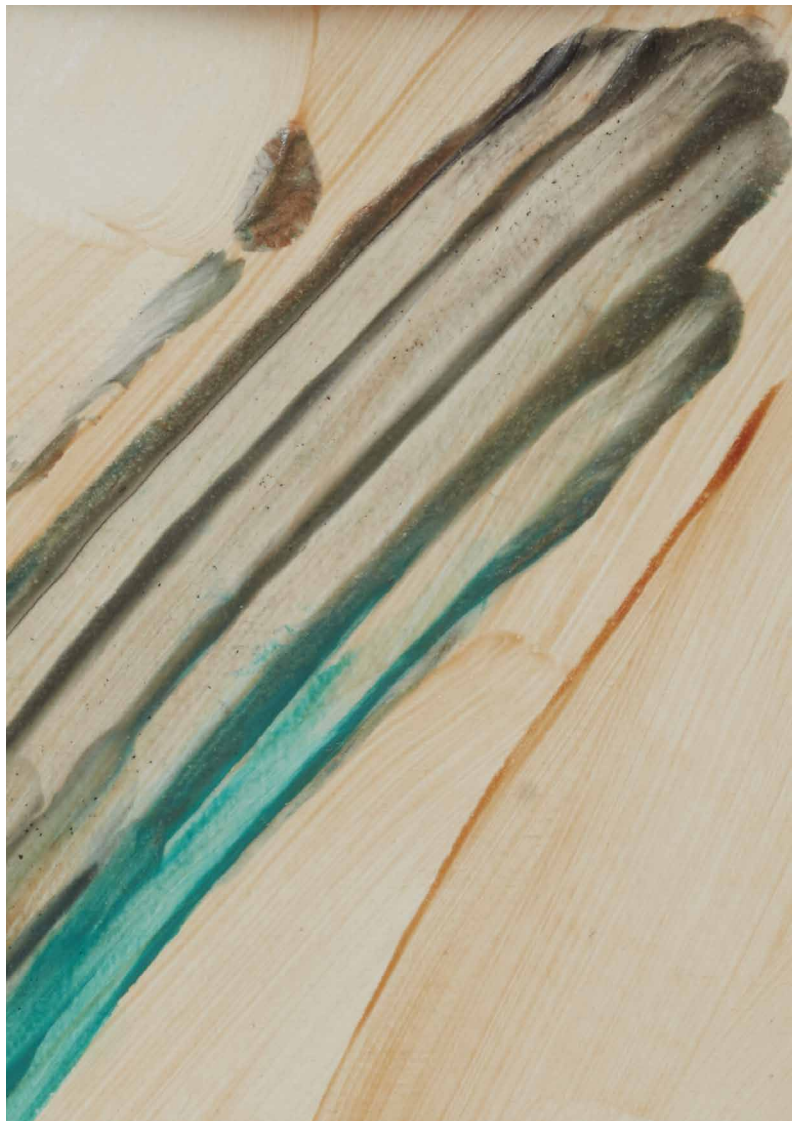


Phthalo, Quinacridone and me

2014

Acrylic paint, 'performed' on paper, signed and dated
 Acrylfarbe 'performed' auf Papier, signiert und datiert
 65 × 50 cm





Digital

2014

Acrylic paint, 'performed' on paper, signed and dated
 Acrylfarbe 'performed' auf Papier, signiert und datiert
 65 × 50 cm





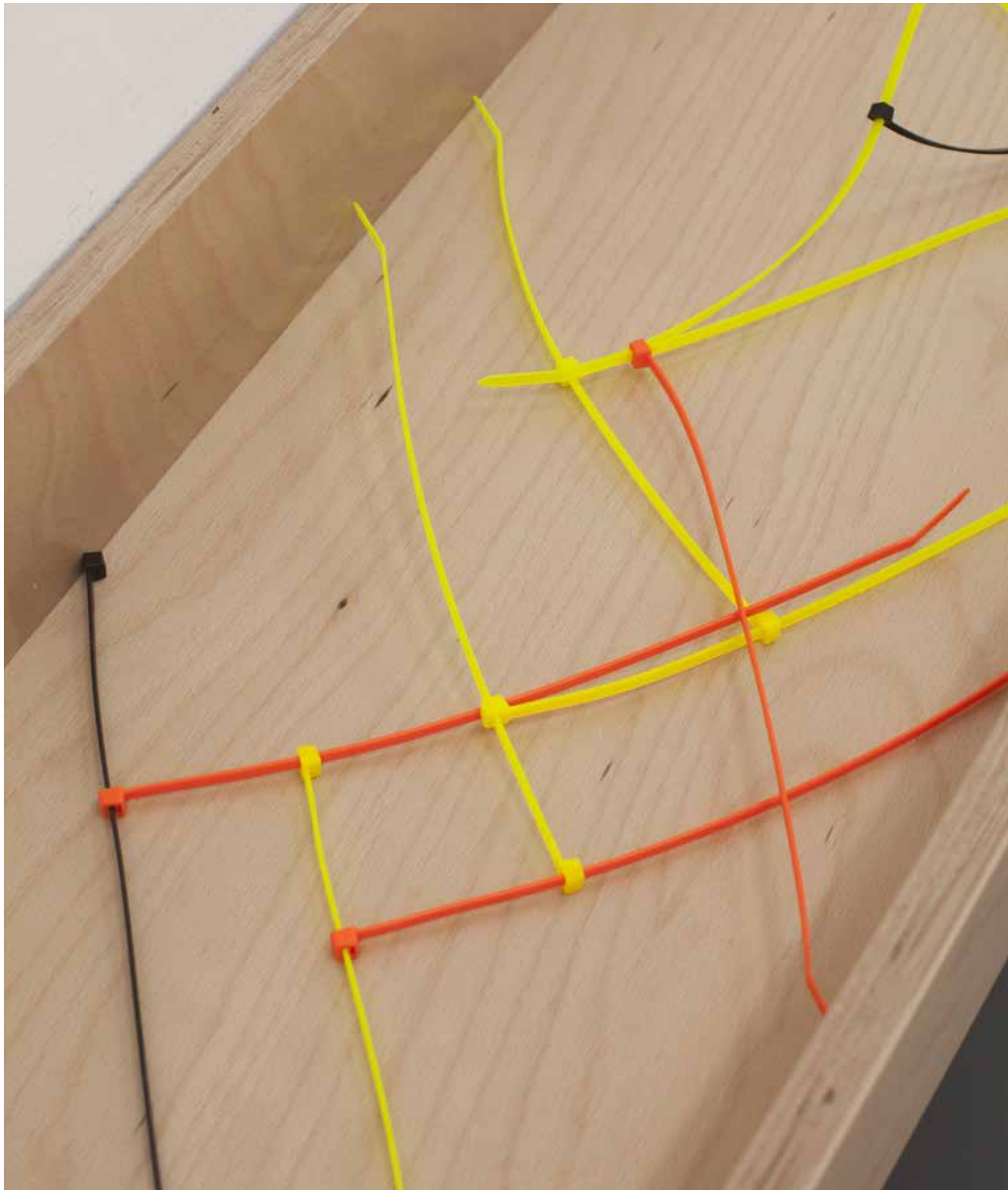
buchstabieren

2010

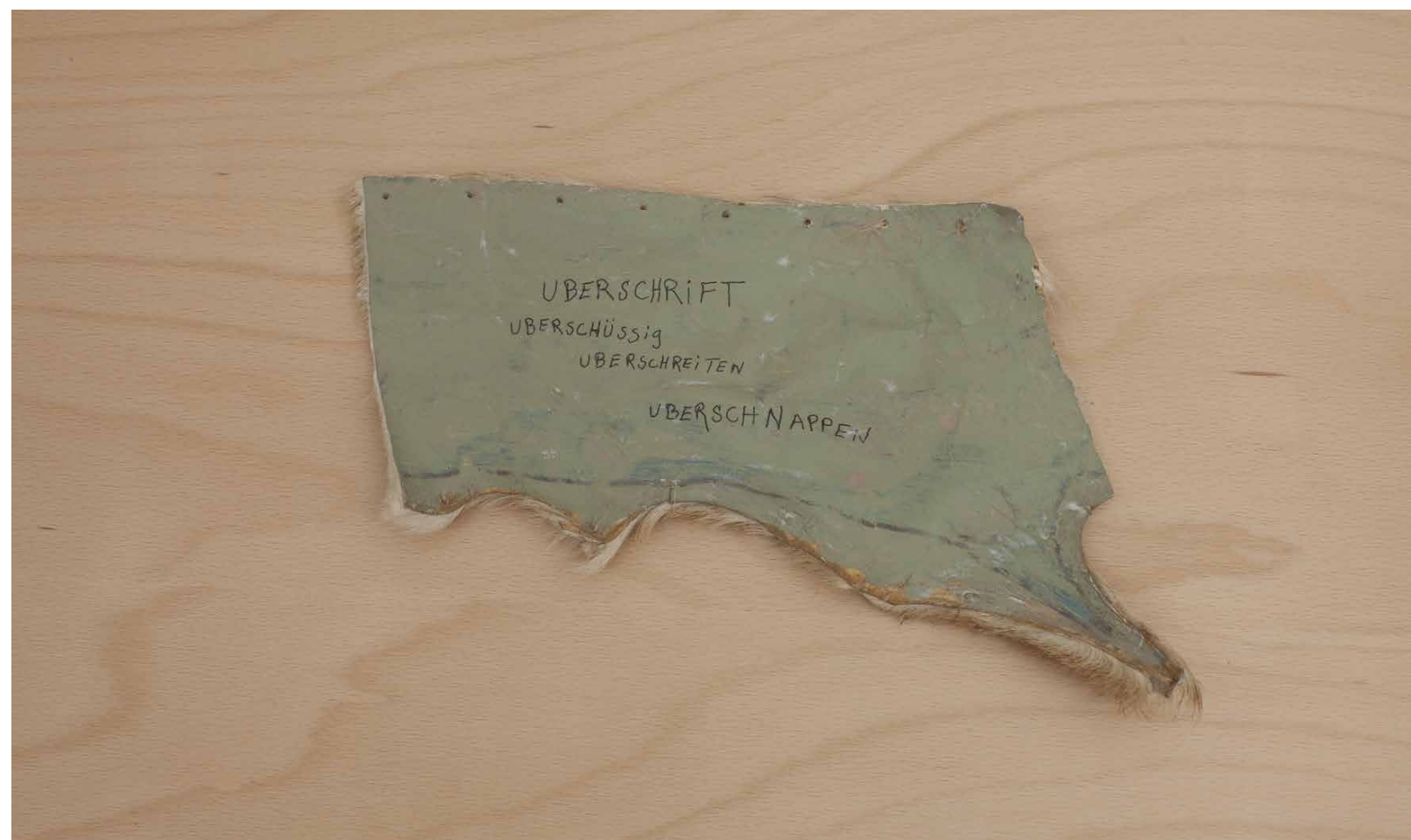
Paper, overpainted skin, beech, acrylic paint, zip ties

Papier, bemalte Tierhaut, Buchenholz, Acrylfarbe, Kabelbinder

ca. 20 × 546 × 78 cm



buchstabieren
2010
Details



buchstabieren
2010
Details

ELECTRICITY SUPPLY BOARD

DAILY LOAD REPORT

Region North

GEN. STATION FRI day 28, 3, 1975

Date	GENERATOR 1				GENERATOR 2				GENERATOR 3				GENERATOR 4				G.S.				G. 6				TRAFO 24				TRAFO 242				GROSS GENERATION			
	MWH	KGH	AMPS	P.F.	MWH	KGH	AMPS	P.F.	MWH	KGH	AMPS	P.F.	MWH	KGH	AMPS	P.F.	MWH	KGH	AMPS	P.F.	MWH	KGH	AMPS	P.F.	MWH	KGH	AMPS	P.F.	MWH	KGH	AMPS	P.F.	MWH	KGH	AMPS	P.F.
1																																				
2																																				
3																																				
4																																				
5																																				
6																																				
7																																				
8																																				
9																																				
10																																				
11																																				
12																																				
13																																				
14																																				
15																																				
16																																				
17																																				
18																																				
19																																				
20																																				
21																																				
22																																				
23																																				
24																																				
25																																				
26																																				
27																																				
28																																				
29																																				
30																																				
31																																				
32																																				
33																																				
34																																				
35																																				
36																																				
37																																				
38																																				
39																																				
40																																				
41																							</													

Hydro station levels & cbs. in; discharge—Thermal station
Hu. Trafo, and other main trafo readings.

220, 110, 38 AND 10KV. LINE CABLE MW. MS. AMPS

[illegible]

Signed _____

248

NAME EARWAKER, FRANK RALPHDEPT ENGINEERSDATE OF BIRTH 5th MARCH 1897BIRTH CERTIFICATE SEEN ☒DATE OF JOINING COMPANY 16th JANUARY 1926DATE OF JOINING FUND -1 JAN 1949DATE OF ENTRY TO PENSIONABLE SERVICE 16th JANUARY 1926PERIOD OF PENSIONABLE SERVICE UP TO COMMENCEMENT OF FUND 22-1-47/11/48WEEKLY WAGE AT COMMENCEMENT OF FUND £6-9-6TOTAL CONTRIBUTIONS IN RESPECT OF PAST PENSIONABLE SERVICE £148-17-6DATE OF EXIT AND REASON Retired 27/10/7

DATE	WAGE FOR THE JOB	NO. OF WEEKS	YEARLY PENSION WAGE	CONTRIBUTION			Voluntary Pension (pence)	QUARTERLY AMOUNT			AMOUNT PAID INTO FUND			YEARLY TOTAL			ACCUMLATIVE TOTAL			MEMBERS ACCUMULATED TOTAL CONTRIBUTIONS WITH 2 1/2% INTEREST	
				Compulsory	Voluntary	Company		COMPULSORY	VOLUNTARY	COMPANY	COMPULSORY	VOLUNTARY	COMPANY	COMPULSORY	VOLUNTARY	COMPANY	COMPULSORY	VOLUNTARY	COMPANY	COMPULSORY	VOLUNTARY
1.1.49	6 9 6	1	206 11	2 4				2 6			2 6			2 6							
2.1.49	6 13 2	12	246 11 3	2 7				1 11			2 16			2 16							
1.4.49	6 13 2	13		2 7				1 13 7			3 10			3 10							
1.7.49	6 13 2	13		2 7				1 13 7			3 10			3 10							
1.10.49	6 13 2	13		2 7				1 13 7			3 10			3 10			6 14 3		12 2 6		
1.1.50	6 13 2	13	246 11 3	2 7				1 13 7			3 10			3 10							
1.4.50	6 13 2	13		2 7				1 13 7			3 10			3 10							
1.7.50	6 13 2	13		2 7				1 13 7			3 10			3 10							
1.10.50	6 13 2	13	246 11 3	2 7				1 13 7			3 10			3 10			6 14 4		12 2 8	13 8 7	24 5 2
1.1.51	6 13 2	13	246 11 3	2 7				1 13 7			3 10			3 10							
1.4.51	7 2 2	13	246 11 3	2 7				1 13 7			3 10			3 10							
1.7.51	7 2 2	13	246 11 3	2 7				1 13 7			3 10			3 10							
1.10.51	7 2 2	13	246 11 3	2 7				1 13 7			3 10			3 10			7 1 4		12 6 8	20 9 11	37 1 10
1.1.52	7 2 2	13	246 11 3	2 7				1 13 7			3 10			3 10							
1.4.52	7 2 2	13	246 11 3	2 7				1 13 7			3 10			3 10							
1.7.52	7 2 2	13	246 11 3	2 7				1 13 7			3 10			3 10			7 12 6		13 19 6	28 2 5	51 1 4
1.10.52	7 2 2	13	246 11 3	2 7				1 13 7			3 10			3 10							
1.1.53	7 2 2	13	246 11 3	2 7				1 13 7			3 10			3 10							
1.4.53	7 2 2	13	246 11 3	2 7				1 13 7			3 10			3 10			8 2 10		15 4 8	36 5 3	66 6 1
1.7.53	7 2 2	13	246 11 3	2 7				1 13 7			3 10			3 10							
1.10.53	7 2 2	13	246 11 3	2 7				1 13 7			3 10			3 10			8 2 10		15 4 8	36 5 3	66 6 1
1.1.54	7 2 2	13	246 11 3	2 7				1 13 7			3 10			3 10							
1.4.54	7 2 2	13	246 11 3	2 7				1 13 7			3 10			3 10							
1.7.54	7 2 2	13	246 11 3	2 7				1 13 7			3 10			3 10							
1.10.54	7 2 2	13	246 11 3	2 7				1 13 7			3 10			3 10			8 2 10		15 4 8	36 5 3	66 6 1
1.1.55	7 2 2	13	246 11 3	2 7				1 13 7			3 10			3 10							
1.4.55	7 2 2	13	246 11 3	2 7				1 13 7			3 10			3 10							
1.7.55	7 2 2	13	246 11 3	2 7				1 13 7			3 10			3 10							
1.10.55	7 2 2	13	246 11 3	2 7				1 13 7			3 10			3 10			8 2 10		15 4 8	36 5 3	66 6 1
1.1.56	7 2 2	13	246 11 3	2 7				1 13 7			3 10			3 10							
1.4.56	7 2 2	13	246 11 3	2 7				1 13 7			3 10			3 10							
1.7.56	7 2 2	13	246 11 3	2 7				1 13 7			3 10			3 10							
1.10.56	7 2 2	13	246 11 3	2 7				1 13 7			3 10			3 10			8 2 10		15 4 8	36 5 3	66 6 1
1.1.57	7 2 2	13	246 11 3	2 7				1 13 7			3 10			3 10							
1.4.57	7 2 2	13	246 11 3	2 7				1 13 7			3 10			3 10							
1.7.57	7 2 2	13	246 11 3	2 7				1 13 7			3 10			3 10							
1.10.57	7 2 2	13	246 11 3	2 7				1 13 7			3 10			3 10			8 2 10		15 4 8	36 5 3	66 6 1
1.1.58	7 2 2	13	246 11 3	2 7				1 13 7			3 10			3 10							
1.4.58	7 2 2	13	246 11 3	2 7				1 13 7			3 10			3 10							
1.7.58	7 2 2	13	246 11 3	2 7				1 13 7			3 10			3 10							
1.10.58	7 2 2	13	246 11 3	2 7				1 13 7			3 10			3 10			8 2 10		15 4 8	36 5 3	66 6 1
1.1.59	7 2 2	13	246 11 3	2 7				1 13 7			3 10			3 10							
1.4.59	7 2 2	13	246 11 3	2 7				1 13 7			3 10			3 10							
1.7.59	7 2 2	13	246 11 3	2 7				1 13 7			3 10			3 10							
1.10.59	7 2 2	13	246 11 3	2 7				1 13 7			3 10			3 10			8 2 10		15 4 8	36 5 3	66 6 1
1.1.60	7 2 2	13	246 11 3	2 7				1 13 7			3 10			3 10							
1.4.60	7 2 2	13	246 11 3	2 7				1 13 7			3 10			3 10							
1.7.60	7 2 2	13	246 11 3	2 7				1 13 7			3 10			3 10							
1.10.60	7 2 2	13	246 11 3	2 7				1 13 7			3 10			3 10			8 2 10		15 4 8	36 5 3	66 6 1
1.1.61	7 2 2	13	246 11 3	2 7				1 13 7			3 10			3 10							
1.4.61	7 2 2	13	246 11 3	2 7				1 13 7			3 10			3 10							
1.7.61	7 2 2	13	246 11 3	2 7				1 13 7			3 10			3 10							
1.10.61	7 2 2	13	246 11 3	2 7				1 13 7			3 10			3 10			8 2 10		15 4 8	36 5 3	66 6 1
1.1.62	7 2 2	13	246 11 3	2 7				1 13 7			3 10			3 10							
1.4.62	7 2 2	13	246 11 3	2 7				1 13 7			3 10			3 10							
1.7.62	7 2 2	13	246 11 3	2 7				1 13 7			3 10			3 10							
1.10.62	7 2 2	13	246 11 3	2 7				1 13 7			3 10			3 10			8 2 10		15 4 8	36 5 3	66 6 1
1.1.63	7 2 2	13	246 11 3	2 7				1 13 7			3 10			3 10							
1.4.63	7 2 2	13	246 11 3	2 7				1 13 7			3 10			3 10							
1.7.63	7 2 2	13	246 11 3	2 7				1 13 7			3 10			3 10							
1.10.63	7 2 2	13	246 11 3	2 7				1 13 7			3 10			3 10			8 2 10		15 4 8	36 5 3	66 6 1
1.1.64	7 2 2	13	246 11 3	2 7				1 13 7			3 10			3 10							
1.4.64	7 2 2	13	246 11 3	2 7				1 13 7			3 10			3 10							
1.7.64	7 2 2	13	246 11 3	2 7				1 13 7			3 10			3 10							
1.10.64	7 2 2	13	246 11 3	2 7				1 13 7			3 10			3 10			8 2 10		15 4 8	36 5 3	66 6 1
1.1.65	7 2 2	13	246 11 3	2 7				1 13 7			3 10			3 10							
1.4.65	7 2 2	13	246 11 3	2 7				1 13 7			3 10			3 10							
1.7.65	7 2 2	13	246 11 3	2 7				1 13 7			3 10			3 10							
1.10.65	7 2 2	13	246 11 3	2 7				1 13 7			3 10			3 10			8 2 10		15 4 8	36 5 3	66 6 1
1.1.66	7 2 2	13	246 11 3	2 7				1 13 7			3 10			3 10							

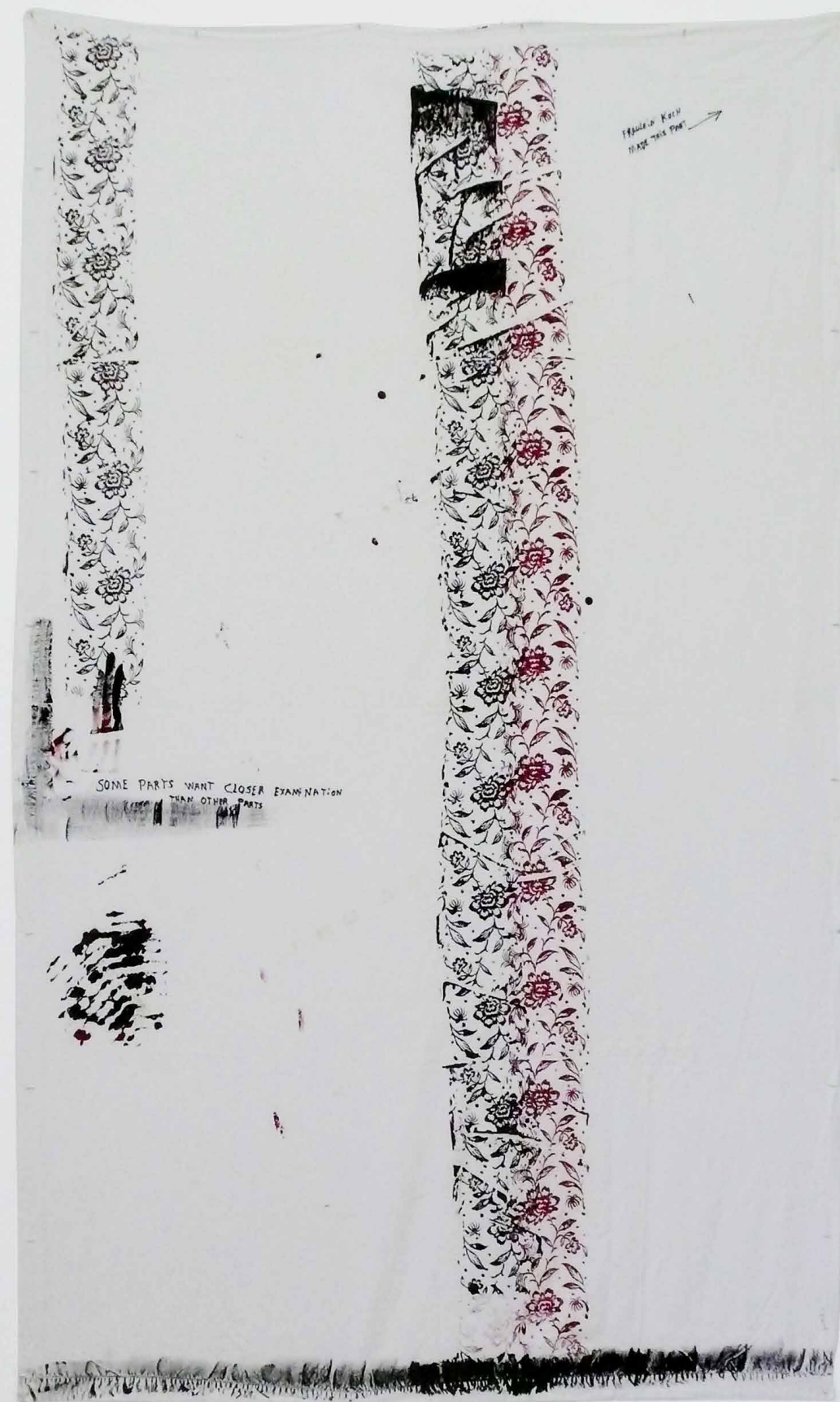
flowers on german linen

2010

Acrylic paint on german linen

Acrylfarbe auf deutschem Leinenbettbezug

250 × 150 cm





flowers on german linen

2010

Detail



Songs of My Childhood

Part One: Songs to Get Rid Of

Part Two: Songs to Keep

2014

Two-channel video installation

2 Pal-DVDs, each 11 min. 51 sec., colour, sound

Zwei-Kanal Videoinstallation

2 Pal-DVDs, je 11 Min. 51 Sek., Farbe, Ton

Edition 12 + V a.p.



Songs of My Childhood
Part One: Songs to Get Rid Of
Part Two: Songs to Keep
2014

Jimmie Durham's ***Songs of My Childhood*** is a two-channel video installation. On the left screen with ***Part One: Songs to Get Rid Of***, Durham sings military, Christian, sexist, brutal and silly songs he has learned in his childhood. He remembers sometimes only a few lines of those songs which he wants to forget, but can't get rid of them: "What can wash away my sins ... O precious is the flow that makes me white as snow", "I don't want her, you can have her she's too fat for me", "Throw Mama from the train ..." and so forth. On the right screen with ***Part Two: Songs to Keep***, Durham sings the songs he is fond of – love songs and beautiful folksongs, playing the harmonica underlines the melancholic atmosphere of his vocal performance. ***Part Two: Songs to Keep*** ends with the lines "Today has been a lonesome day ... and tomorrow will be the same old way".

Songs of My Childhood is an important piece within Durham's video work. Realized in the 1990s by Durham and Maria Teresa Alves, his early films contain action pieces and performances with stones. They were presented as a whole at Barbara Wien gallery in Berlin in 2000. In 2002, the cinema film *The Pursuit of Happiness* (with Anri Sala as the main actor) followed. In 2004, Durham produced his famous video *Smashing*: he smashes objects given to him by his students, sitting at a desk and signing a certificate after each act of destruction.

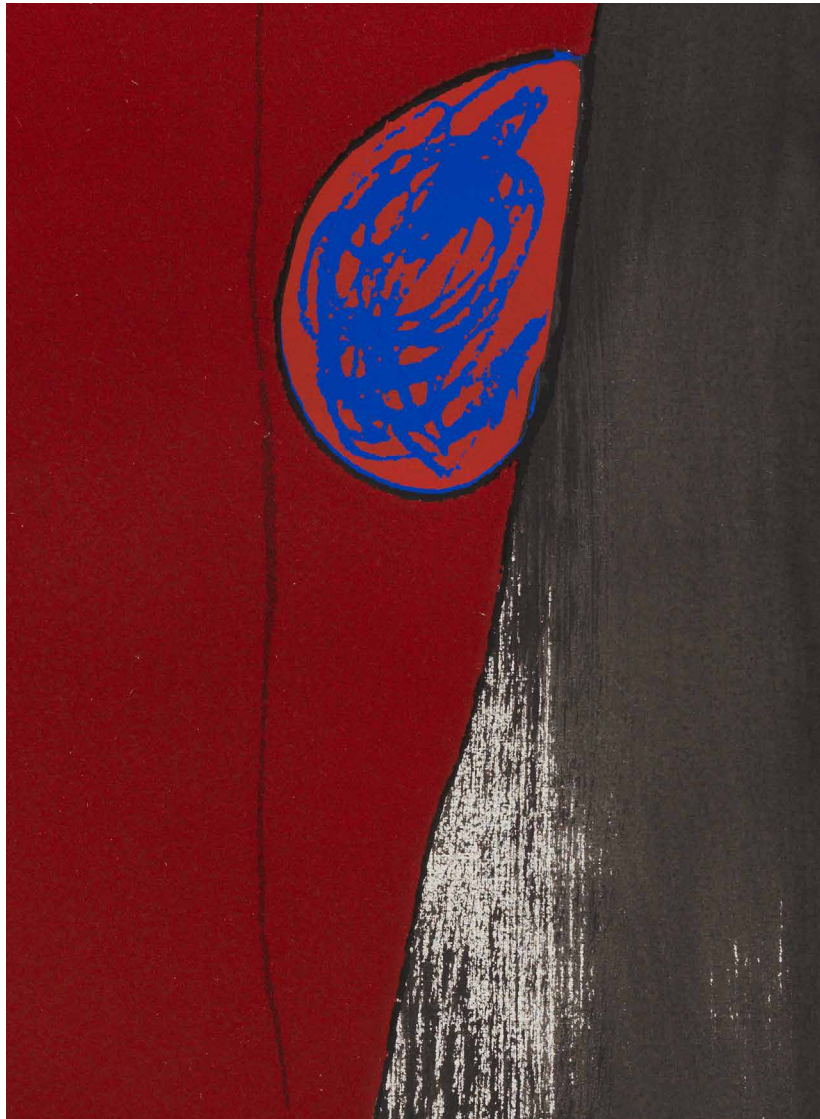
In his retrospective at the M HKA in Antwerp in 2012, Durham's films had a main part. It made clear that this medium plays a key role in Durham's work.

Songs of My Childhood
Part One: Songs to Get Rid Of
Part Two: Songs to Keep
2014

Video: <https://vimeo.com/408313207>



Film stills



BLEW C SPIRIT

2020

Mixed media on paper, numbered and signed

Mixed Media auf Papier, nummeriert und signiert

107 × 78 cm

Edition 30/30 (from 30 editions and × AP / von 30 Editionen und × AP)





NIGHT VISION

2020

Mixed media on paper, numbered and signed

Mixed Media auf Papier, nummeriert und signiert

100 × 70 cm

Edition 21/30 (from 30 editions and × AP / von 30 Editionen und × AP)





JE N' SAIS QUOI

2020

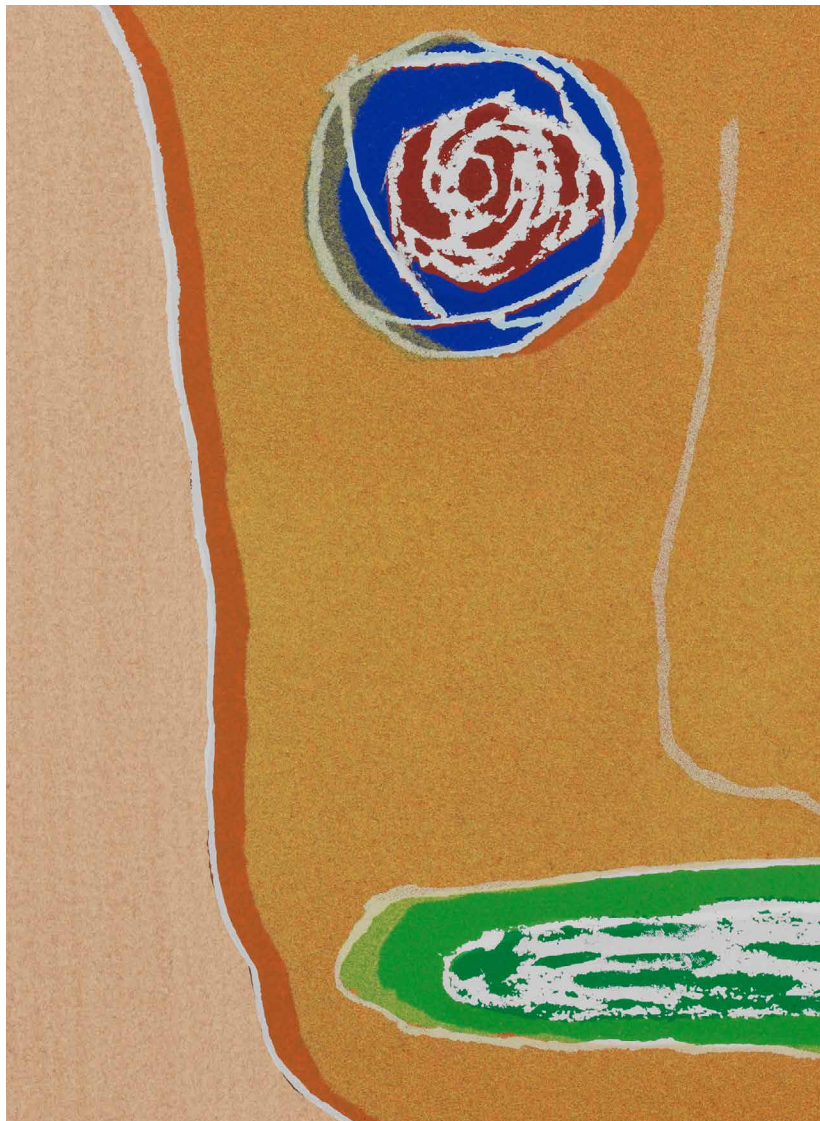
Mixed media on paper, numbered and signed

Mixed Media auf Papier, nummeriert und signiert

107 × 78 cm

Edition 17/30 (from 30 editions and × AP / von 30 Editionen und × AP)





CHAGRIN

2020

Mixed media on paper, numbered and signed

Mixed Media auf Papier, nummeriert und signiert

107 × 78 cm

Edition 17/30 (from 30 editions and × AP/von 30 Editionen und × AP)





Resurrection

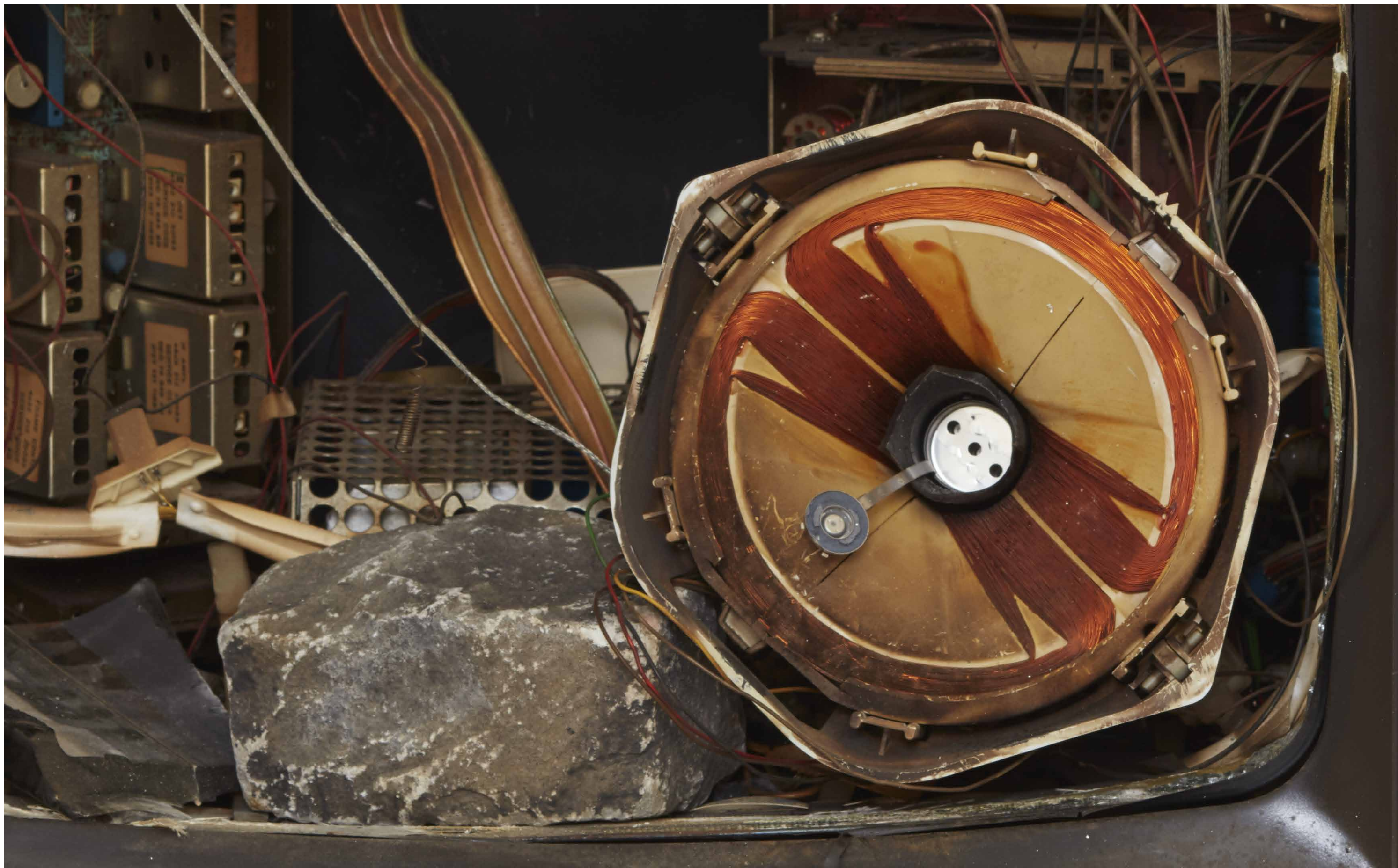
1995

TV, stone, glass, wire

Fernseher, Stein, Glas, Draht

46 × 66 × 42 cm

Edition 9 (of 21 unique pieces, signed and numbered each/
von 21 je signierten und nummerierten Unikaten)



Resurrection
1995
Edition 9
Detail



Resurrection

1995

TV, stone, glass, wire

Fernseher, Stein, Glas, Draht

46 × 68.5 × 42 cm

Edition 15 (of 21 unique pieces, signed and numbered each/
von 21 je signierten und nummerierten Unikaten)



Resurrection
1995
Edition 15
Detail



Resurrection

1995

TV, stone, glass, wire

Fernseher, Stein, Glas, Draht

45 × 66 × 45 cm

Edition 19 (of 21 unique pieces, signed and numbered each/
von 21 je signierten und nummerierten Unikaten)



Resurrection
1995
Edition 19
Detail